



Certificate of Analysis

CANNABUSINESS LABORATORIES, LLC

Customer:

CBZ Enterprises
938 Manchester St.
Lexington, KY 40508

Received Date **8/26/2025**

COA Released **8/27/2025**

Comments *Lab License Number = P_0059
Collection Date = 08/13/2025*

Sample ID **250826023**

Order Number **CB250826005**

Sample Name **BLM-600-060525B**

External Sample ID

Batch Number **060525B**

Product Type **Topical**

Sample Type **Topical**

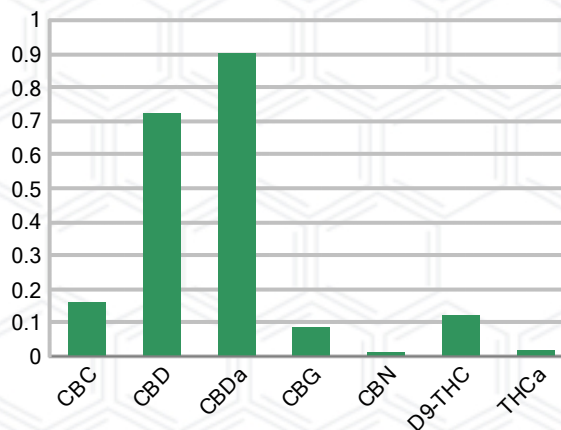
CANNABINOID PROFILE (Product Size = 30 g)

Analyte	LOQ (%)	% Weight	mg/g	mg/unit
CBC	0.01	0.161	1.609	48.27
CBD	0.01	0.723	7.228	216.80
CBDa	0.01	0.902	9.020	270.60
CBDV	0.01	ND	ND	ND
CBG	0.01	0.086	0.865	25.95
CBGa	0.01	ND	ND	ND
CBN	0.01	0.012	0.123	3.69
d8-THC	0.01	ND	ND	ND
d9-THC	0.01	0.124	1.242	37.26
THCa	0.01	0.019	0.186	5.58
Total Cannabinoids		2.027	20.27	608.10
Total Potential THC		0.140	1.405	42.15
Total Potential CBD		1.514	15.14	454.20
Total Potential CBG		0.086	0.865	25.95
Ratio of Total Potential CBD to Total Potential THC			10.81	: 1
Ratio of Total Potential CBG to Total Potential THC			0.61	: 1

SAMPLE IMAGE



CANNABINOIDS % Weight



*Total Cannabinoids refers to the sum of all cannabinoids detected.

*Total Potential CBD = (0.877 x CBDa) + CBD. *Total Potential THC = (0.877 x THCa) + THC. *Total Potential CBG = (0.877 x CBGa) + CBG.

*Total Potential THC/CBD are calculated to take into account the loss of an acid group during decarboxylation.



J. Hobgood
Laboratory Manager

SIGNATURE

Jamie Hobgood

LABORATORY MANAGER

08/27/2025 4:15 PM

DATE

This product has been tested by CannaBusiness Laboratories using validated testing methodologies and a quality system. Values reported relate only to the product tested. CannaBusiness Laboratories makes no claims as to the efficacy, safety, or other risks associated with any detected or non-detected levels of any compounds reported herein. This Certificate shall not be reproduced except in full, without the written permission of CannaBusiness Laboratories. Photo is of sample received by the lab and may vary from final packaging. The results apply to the sample as received.



Certificate of Analysis

CANNABUSINESS LABORATORIES, LLC

Customer

CBZ Enterprises
938 Manchester St.
Lexington, KY 40508



Sample Name: BLM-600-060525B

Sample ID: 250826023

Order Number: CB250826005

Product Type: Topical

Sample Type: Topical

Received Date: 08/26/2025

Batch Number: 060525B

COA released: 08/27/2025 4:15 PM

Potency (mg/g)

Date Tested: 08/27/2025

Method: CB-SOP-028

Instrument:

0.140 %	1.514 %	2.027 %	20.27 mg/g
Total THC	Total CBD	Total Cannabinoids	Total Cannabinoids

Analyte	Result	Units	LOQ	Result	Units
CBC (Cannabichromene)	0.161	%	0.010	1.609	mg/g
CBD (Cannabidiol)	0.723	%	0.010	7.228	mg/g
CBDa (Cannabidiolic Acid)	0.902	%	0.010	9.020	mg/g
CBDV (Cannabidivarin)	ND	%	0.010	ND	mg/g
CBG (Cannabigerol)	0.086	%	0.010	0.865	mg/g
CBGa (Cannabigerolic Acid)	ND	%	0.010	ND	mg/g
CBN (Cannabinol)	0.012	%	0.010	0.123	mg/g
D8-THC (D8-Tetrahydrocannabinol)	ND	%	0.010	ND	mg/g
D9-THC (D9-Tetrahydrocannabinol)	0.124	%	0.010	1.242	mg/g
THCa (Tetrahydrocannabinolic Acid)	0.019	%	0.010	0.186	mg/g



JHobgood
Laboratory Manager

Jamie Hobgood

08/27/2025 4:15 PM

SIGNATURE

DATE

NT = Not tested, ND = Not detected; LOQ = Limit of Quantitation; <LOQ = Detected; >ULOL = Above upper limit of linearity; CFU/g = Colony forming units per 1 gram; TNTC = Too numerous to count

This product has been tested by CannaBusiness Laboratories using validated testing methodologies and a quality system. Values reported relate only to the product tested. CannaBusiness Laboratories makes no claims as to the efficacy, safety, or other risks associated with any detected or non-detected levels of any compounds reported herein. This Certificate shall not be reproduced except in full, without the written permission of CannaBusiness Laboratories. Photo is of sample received by the lab and may vary from final packaging. The results apply to the sample as received.